

Flow Proposal: James M. Lilly

Parallax is monumental wall sculpture presented in the format of a large triptych. It chronicles difficult environmental conditions impacting migration of Chinook Salmon through the Lake Washington Ship Canal towards the Cedar and Sammamish River watersheds. Southern resident killer whales are heavily dependent on the Chinook Salmon population, so any change to the condition of Chinook runs directly influences the health of the southern resident orca population as well.

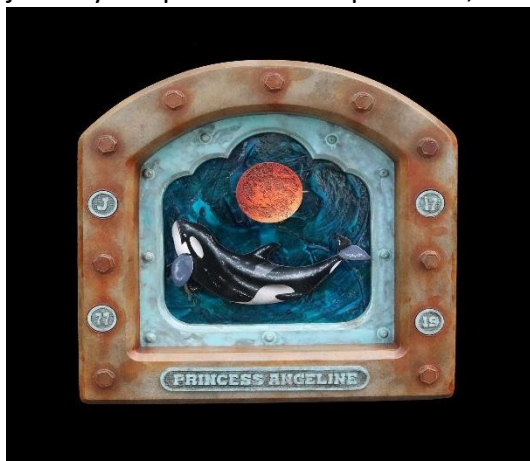
Inspiration, Symbolism, and a Brief Description of the Work

The first (left) panel of the triptych describes the first leg of the Chinooks' journey as they enter the Lake Washington Ship Canal from Puget Sound. This encompasses the waterway from the Ballard Locks to the entrance to Lake Washington. Two of the major obstacles confronting the salmon are: low oxygen levels and inconsistent salt levels. These will be symbolically addressed as will references to key landmarks along the way.



The second (center) panel is the largest in the triptych and highlights the top of the food chain: the Southern Resident orcas. This will indicate the circumstances surrounding the plight of the J-Pod population. As with the other triptych panels, geographic landmarks of significance will be highlighted in the piece, typically as GPS coordinates which will encourage viewers to participate with the artwork by searching these coordinates with their phones.

The third (right) panel will represent the salmon's continued migration through Lake Washington into the watersheds of the Cedar and Sammamish Rivers as well as a number of the small tributaries such as May Creek and Kelsey Creek. The two chief concerns for this portion of the journey are predators and pollution, which will be represented with geographical references to



features such as the Issaquah Fish Hatchery and Landsburg Dam.

Artistic Format Background

I refer to my artworks as relics, most of which take on the appearance of an industrial tabernacle or altarpiece. While the components of each appear to be found objects they are in fact artist created and typically constructed from wood. The next step is to faux paint them as distressed steel, bronze,

weathered wood, concrete, brick, stone, and other materials. Sacred objects and animals such as salmon or orcas are of importance and occupy niches contained within the work. Clues to geographical locations within my works are inserted in the form of plaques, medallions, signage, fabricators notations, and even graffiti.

Flow Ballard Site Specifications and Project Details

The installation at the Ballard site will entail the assembly of three individual 'tabernacle' style constructions and when installed will function as a single piece. The two smaller "wings" will be



around 4 ft wide and 6 ft tall and approximately 2 - 6 in deep. The largest center section, flanked by the wings, will be 5 ft wide, 8 - 9 ft tall and 6 - 10 in deep.

Threshold, the Lake Washington Waterway themed left section will feature a school of cut-out Chinook Salmon in pre-spawning colors; those normally seen in a fish that is fresh from salt water. Landmarks of

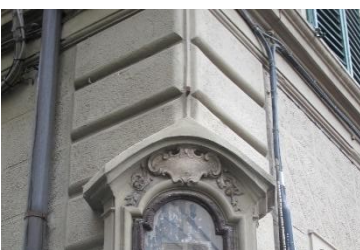
significance such as Chittenden Locks, Fremont Cut, Gasworks Park, Lake Union and the Montlake Cut will be GPS coordinates noted. References to alarming oxygen and salt levels will be nuanced in the work. As in most of my works, the title will be included somewhere on the unit as signage of some kind.

Temporal, the center section will highlight two cut-out orca whales within the center niche along with symbolic notations concerning PCB pollution, vessel traffic, and food limitations. Locations from Northern British Columbia to Puget Sound will be documented within the work.

Ephemeral, the right panel will present another school of cut-out Chinook Salmon, contrasted in full spawning colors. Predators and the urbanization of shorelines are risks the Chinook must face. These will be represented in the panel as well as geographical notations pertaining to sites such as the Issaquah Fish Hatchery and Landsburg Dam.

It would be fitting that an artwork, to be installed in Ballard and inspired by the Lake Washington Ship Canal region should have a ship like or nautical flavor. The look and feel of the tabernacle frames will appear to be rusted steel, perhaps appearing salvaged from a retired fishing vessel or decommissioned bridge component.

I wish to attach the pieces high on the wall to duplicate the feel of the street altars in countries like Italy and France. This would also help alleviate potential vandalism.



Construction and Materials

The three tabernacles will be constructed from quality materials including marine grade plywood and sign making panels (MDO – Medium Density Overlay). Assistance in design, construction and assembly has been secured from Burke Gibson LLC of Auburn Washington. Burke Gibson is an experienced fabrication, installation, and millwork facility. Weather proofing will include a sealing with epoxy before any painting begins. Exterior paints, rated for use in this region, will be utilized. Smaller components such as individual salmon will need to incorporate fastening elements/techniques to discourage them from being vandalized or pried loose.

Florence Italy street altar example

Tentative plans are for each wing to be 3 constructed with 3 sections: a base, body and capital and then bolted together on-site before installation. A concealed fastening system will be incorporated for easy installation and removal by ArtSite.

Community involvement

The fall spawning runs of Chinook, Coho, and Sockeye Salmon which pass through the ship canal system will coincide with the display of *Parallax* and provide a unique and timely opportunity to interact with the ship canal community.

Budget:

- Drafting Consulting & CAD Design - \$300
- Workspace/Studio Rental - \$1000
- Possible Assistants - \$ 1000
- Materials and Fabrication: \$2270
 - Marine Plywood
 - Sign making panels (MDO)
 - Epoxy
 - Paint
 - Fasteners and assembly hardware
 - Metallic leafing
 - Protective coating
- Insurance- \$200
- Transportation - \$300
- Artist Fees - \$3000
- Contingency - \$1000
- Tax - \$930

Schedule:

4-1: Deliverable #1 (This Document)

- Insurance, Specs, Budget, Proposal

5-1: Deliverables #2

- Create Site Sketches
- Meet with ArtSite to for advice about the fastening system
- Create CAD drawings for each unit after ArtSite consultation
- Begin Maquettes (Document along the way)
- Drawings/schematics of fastening/hanging system

Late May:

- Order materials for Auburn Delivery
- CNC files finalized.

June 1, 2023

- Begin assembly of the 3 units frames (Auburn Site)

July 1, 2023

- Carpentry Completed – final fitting (Auburn Site)
- Finish prep of frames completed (Auburn Site)
- Begin Laser engraving and cutting of elements such as signage, engravings, salmon, and orca initiated (Both on and off the Auburn Site)
- Prep and painting elements such as signage, engravings, salmon, and orca initiated (both on and off the Auburn Site)

Mid July 2023:

- Final finish work for the frames and backgrounds
- Clear coats added as needed
- Final fitting/assembly of Frames
- Final finish and installation of secondary elements
- Disassembly for transportation

First week of August 2023

- Delivery to Ballard Site
- Assembly and installation with ArtSite
- Photo documentation of creative process and assembly submitted

September – October 2023:

- Community event coinciding with salmon runs

February 1, 2024:

- Deinstallation with ArtSite
- Site Restoration

February 15, 2024

- Photo and written documentation delivered

-